

## THEORY 5

### CHORDS

A chord is a group of three or more notes.

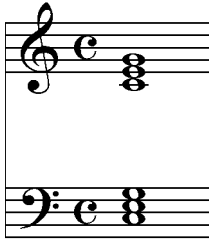
A three note chord is called a TRIAD - R 3 5 (see Theory 2 notes)

A chord with more than three notes is said to have EXTENSIONS (7, 9, 11, or 13).

Basic chords are qualified as:

<u>MAJOR</u>	<u>MINOR</u>	<u>AUGMENTED</u>	<u>DIMINISHED</u>
M3/m3	m3/M3	M3/M3	m3/m3

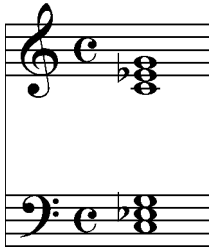
#### EXAMPLE 1



The distance from C to E is a MAJOR 3<sup>rd</sup> (or M3)  
The distance from E to G is a minor 3<sup>rd</sup> (or m3)

This chord would be called a “C Major Chord.” – aka Major/minor Chord  
C Major (C or C Maj)

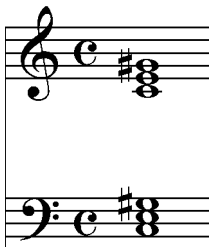
#### EXAMPLE 2



The distance from C to Eb is a minor 3<sup>rd</sup> (or m3)  
The distance from Eb to G is a Major 3<sup>rd</sup> (or M3)

This chord would be called a “C minor chord.” – aka minor/Major Chord  
C minor (C- or C min)

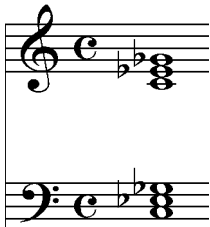
#### EXAMPLE 3



The distance from C to E is a Major 3<sup>rd</sup> (or M3)  
The distance from E to G# is a Major 3<sup>rd</sup> (or M3)

This chord would be called a “C Augmented chord.” – aka Major/Major Chord  
C Augmented (C Aug or C+)

#### EXAMPLE 4



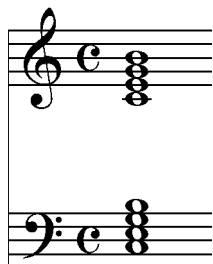
The distance from C to Eb is a minor 3<sup>rd</sup> (or m3)  
The distance from Eb to Gb is a minor 3<sup>rd</sup> (or m3)

This chord would be called a “C diminished chord.” – aka minor/minor Chord  
C diminished (or C dim)

## THEORY 5 (cont)

The most common extension is the 7<sup>th</sup>.  
You may add an extension to any chord to add color and depth to the sound.  
Below are the most common 7<sup>th</sup> chord types

Listed is an example, chord name, abbreviation and the quality of the chord/seventh



C Major 7

C Maj7

Major/Major



C Major -7

C7 (dominant 7)

Major/minor



C minor +7

C min +7

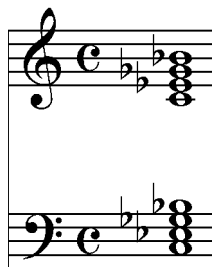
minor/Major



C minor 7

C-7

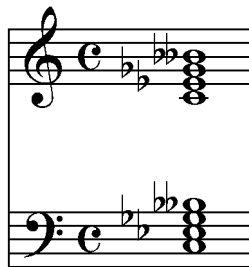
minor/minor



C half diminished

C<sup>ø</sup>

dim/minor



C diminished

C dim (or C<sup>o</sup>)

dim/dim

Other augmented 7<sup>th</sup> chords do exist, but are rarely, if ever used in western music.  
Examples: Aug/min, Aug/dim