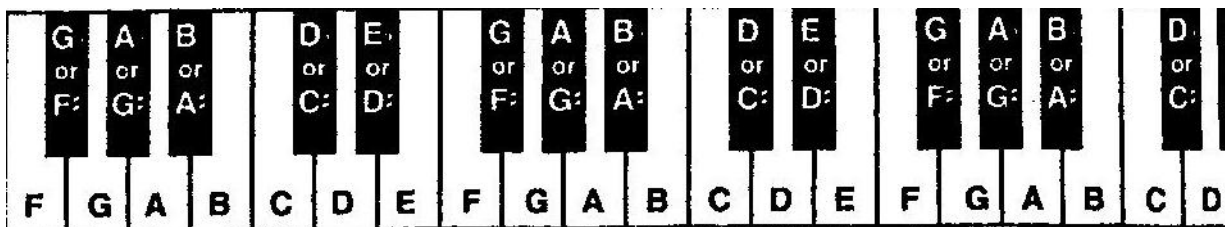


# THEORY NOTES



## SCALES

Major **W W h W W W h**

Natural Minor (melodic minor descending)

Natural minor is like a major scale with a lowered 3<sup>rd</sup>, 6<sup>th</sup>, and 7<sup>th</sup>

**W h W W h W W**

Harmonic Minor

Harmonic Minor is like a major scale with a lowered 3<sup>rd</sup> & 6<sup>th</sup>

**W h W W h m3 h**

Melodic Minor (ascending)

Melodic Minor is like a major scale with a lowered 3<sup>rd</sup>

**W h W W W W h**

## SPECIFIC INTERVALS

DIMINISHED 2<sup>ND</sup> = 0 HALF STEPS

MINOR 2<sup>ND</sup> = 1 HALF STEP

MAJOR 2<sup>ND</sup> = 2 HALF STEPS

AUGMENTED 2<sup>ND</sup> = 3 HALF STEPS

DIMINISHED 3<sup>RD</sup> = 2 HALF STEPS

MINOR 3<sup>RD</sup> = 3 HALF STEPS

MAJOR 3<sup>RD</sup> = 4 HALF STEPS

AUGMENTED 3<sup>RD</sup> = 5 HALF STEPS

DIMINISHED 4<sup>TH</sup> = 4 HALF STEPS

PERFECT 4<sup>TH</sup> = 5 HALF STEPS

AUGMENTED 4<sup>TH</sup> = 6 HALF STEPS

DIMINISHED 5<sup>TH</sup> = 6 HALF STEPS

PERFECT 5<sup>TH</sup> = 7 HALF STEPS

AUGMENTED 5<sup>TH</sup> = 8 HALF STEPS

DIMINISHED 6<sup>TH</sup> = 7 HALF STEPS

MINOR 6<sup>TH</sup> = 8 HALF STEPS

MAJOR 6<sup>TH</sup> = 9 HALF STEPS

AUGMENTED 6<sup>TH</sup> = 10 HALF STEPS

DIMINISHED 7<sup>TH</sup> = 9 HALF STEPS

MINOR 7<sup>TH</sup> = 10 HALF STEPS

MAJOR 7<sup>TH</sup> = 11 HALF STEPS

AUGMENTED 7<sup>TH</sup> = 12 HALF STEPS

DIMINISHED OCTAVE = 11 HALF STEPS

PERFECT OCTAVE = 12 HALF STEPS

AUGMENTED OCTAVE = 13 HALF STEPS



Treble Clef

Bass Clef

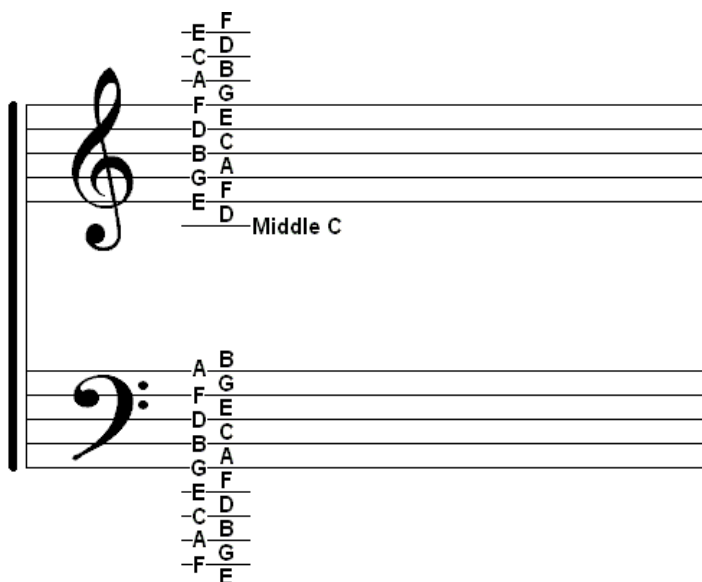
## BASIC INTERVALS

Count the distance between notes beginning with the first note to find the basic interval.

Example: C to G

The answer would be a **5th**

Count ascending



\*hint – find general interval (2<sup>nd</sup>, 3<sup>rd</sup>, etc...then count half steps to QUALIFY the interval)

When counting basic intervals the given note is ALWAYS counted as “ONE”

# TRIADS

A triad (chord) consists of:

ROOT (also called bass or 1<sup>st</sup>)

3<sup>RD</sup>

5<sup>TH</sup>

THE ROOT IS THE BASS NOTE OF THE CHORD

Chords (triads) are ALWAYS built from the bottom going up (don't forget your clef when writing chords!!!)

## HOW TO CLASSIFY CHORDS - ONE 3<sup>RD</sup> ON TOP OF ANOTHER 3<sup>RD</sup>

MAJOR CHORD: Major/minor

MINOR CHORD: minor/Major

DIMINISHED CHORD: minor/minor

AUGMENTED CHORD: major/major

## INTERVAL INVERSIONS

1	inverts to	8
2	inverts to	7
3	inverts to	6
4	inverts to	5
5	inverts to	4
6	inverts to	3
7	inverts to	2
8	inverts to	1

MAJOR inverts to MINOR

MINOR inverts to MAJOR

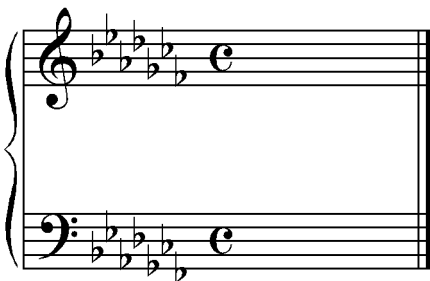
AUGMENTED inverts to DIMINISHED

DIMINISHED inverts to AUGMENTED

PERFECT INVERTS to PERFECT

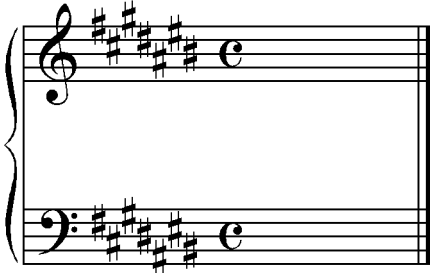
## ORDER OF FLATS

BEADGCF

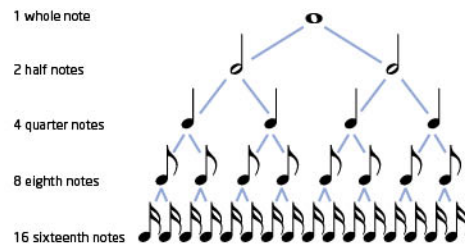


## ORDER OF SHARPS

FCGDAEB



## Note Tree



## Dotted Note Tree

	Note	Equivalent Duration	Rest	Equivalent Duration
Dotted whole				
Dotted half				
Dotted quarter				
Dotted eighth				
Dotted sixteenth				