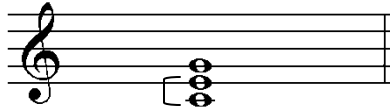


IDENTIFYING TRIADS (THREE NOTE CHORDS)

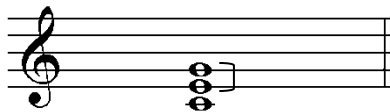
Step 1 Locate & identify what clef is being used (BASS or TREBLE)

Step 2 Identify the notes of the triad from bottom to top (in the example below the notes from bottom to top are C E G)



Step 3 Identify the first interval (how many half steps?)

Always start identifying intervals from bottom-to-top – in this case C to E = 4 half steps



Step 4 Identify the second interval (how many half steps?) – the top interval is E to G = 3 half steps

Step 5 KNOW that 4 half steps is a MAJOR 3rd.

KNOW that 3 half steps is a minor 3rd

Step 6 Using the chart below, name the chord (this chart must be memorized!)

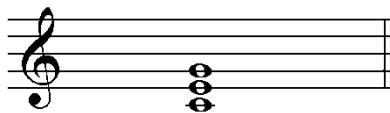
Major 3rd on bottom / minor 3rd on top = MAJOR chord (Maj)

Minor 3rd on bottom / Major 3rd on top = minor chord (min)

Major 3rd on bottom / Major 3rd on top = AUGMENTED chord (AUG)

Minor 3rd on bottom / minor 3rd on top = diminished chord (dim)

The answer to the example used on this page is:



C Major (or C Maj)